

UNWRAP
YOUR WAY TO
\$15K

T&C's Apply.
See website for details.

HOUSE & LAND PACKAGE

\$923,700



Lot 67 The Ponds Estate, THE PONDS



4



2.5



2

Lot Size 360m²

Location & Lifestyle

The Ponds has proved itself as a landmark lifestyle target within Sydney's increasingly coveted North West Growth Corridor. An ideal spot for growing families, Schofields offers an exciting range of quality schools, as well as enviable preschool and childcare options.

Home Design

Mayfield III Hamptons Facade

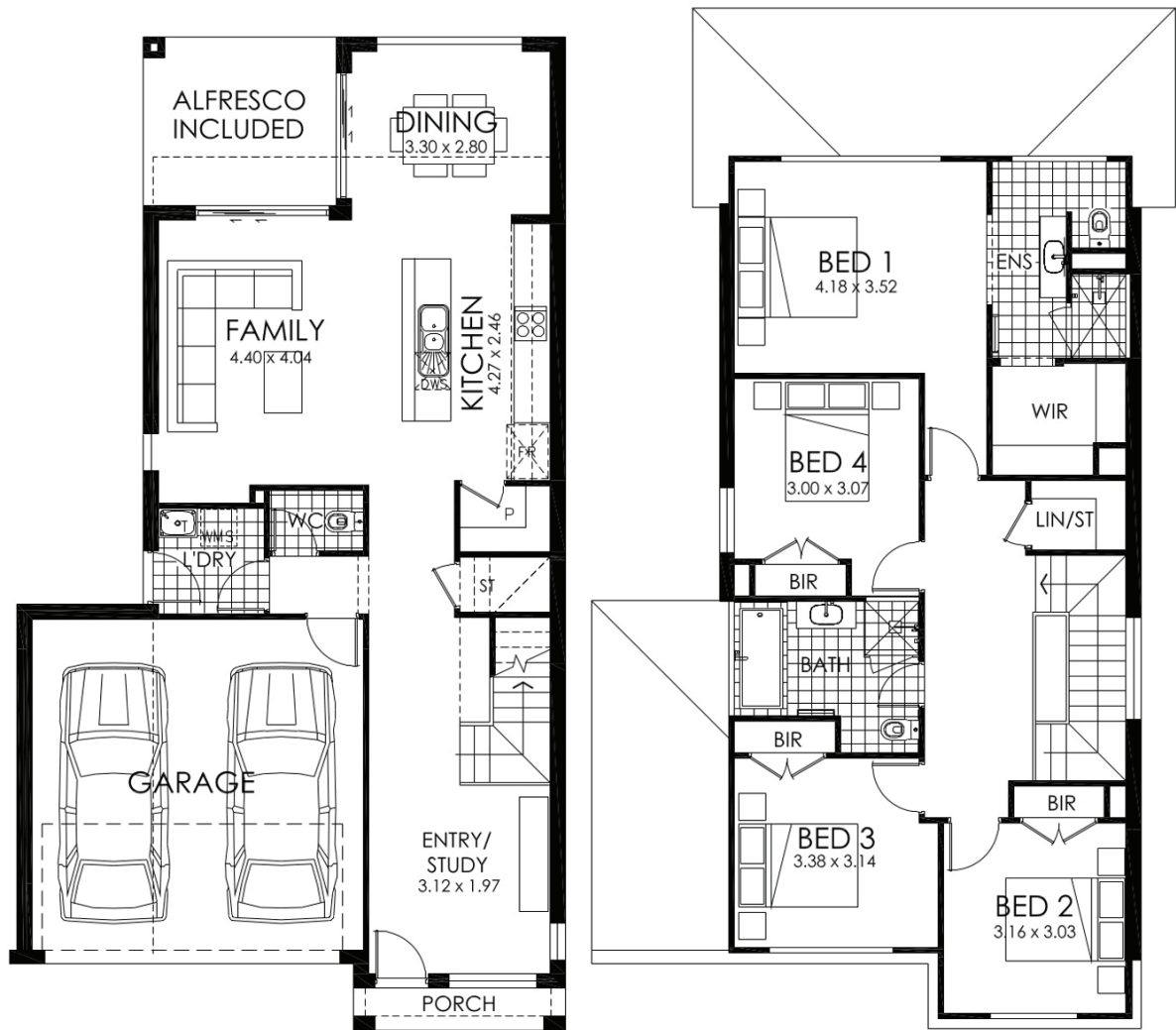
A modern home with its cleverly designed space that is the perfect complement to a narrow block. From a welcoming porch, it retains a practical feel with an office or study at the front of the home. The kitchen, living, dining and entertaining areas are well integrated at the rear to capture light and create an easy indoor-outdoor feel.

Fixed Price Package Inclusions

- Fixed price sites costs
- 20mm Caesarstone benchtop to kitchen
- 14 KW Daikin ducted air conditioning with two zones
- Westinghouse stainless steel appliances
- Timber laminate flooring to living, dining, kitchen and entry hallway; carpets to remainder
- Floor tiling to alfresco & patio
- B&D Colorbond panelift door with remote control operation
- BASIX requirements including rainwater tank
- Driveway and front path

For further information,
please contact **Melina Sormi** on **0416 060 659** or
email **melina.sormi@rawson.com.au**





This site plan is for illustrative purposes only – not to scale.

Lot 67 The Ponds Estate, THE PONDS

Lot size 360m²

| | | | |
|---------------------|---------------------|-----------------|-------------------------------------|
| Ground Floor | 79.4m ² | Porch | 2.42m ² |
| First Floor | 96.44m ² | Alfresco | 8.96m ² |
| Garage | 33.44m ² | Total | 220.66m ² / 23.75Squares |

Disclaimer: Fixed for all lots with up to 1m fall across the site. Real Price Packages are subject to availability, developers design review panel, bushfire requirements & statutory approval. One Real Price to be determined upon tender requests for individual lots and may vary due to site conditions and statutory authority requirements. Whilst every effort is made to provide accurate information images are for illustrative purposes and intended to provide a visual guide only. Refer to individual contracts for final details. Details are correct at time of printing and subject to change without notice or obligation. Printed 10/11/2018

Builders Lic No. NSW 33493C. ACT 19936252B. ABN 67 053 733 841.

this is Real Living

rawsonhomes.com.au